

# KALFASUM

**SPORTARREDO**



LAMPS

KALFASUN

SPORTARREDO



LAMPS



THE  
SECRET  
OF  
OUR  
TAN

LAMPS:  
THE HEART OF THE SOLARIUM

|

Kalfasun, lines of high and low pressure lamps  
of Sportarredo Group for the professional  
tanning and aesthetics world.

Multiple models available in different lengths and performances  
to offer maximum freedom of choice in configuration  
of your equipment.

|

A QUALITY CHOICE  
ENSURES  
UNMATCHED RESULTS



## KALFASUN® BRAND

### QUALITY MATERIALS

The materials chosen reflect the highest construction standards, starting with the "open glass" used for the low pressure lamps which, thanks to its purity, allows optimal passage of the rays. The balancing of gases and phosphors, up to the electrodes. Made by noble metals, are designed to obtain maximum efficiency.

### SCRUPULOUS TESTING

Performed in the Sportarredo laboratories, allows to present on the market lamps that can always satisfy professionals and customers.

### QUALITY AND BALANCE OF RAYS

One of the most delicate moments in the construction process of a lamp. Energy is measured in absolute terms and also in its effect on the skin (erythemal power).

The length of the lamp is also studied in order to ensure the emission as constant as possible along its entire surface.



KALFASUN®

LOW  
PRESSURE

LAMPS



# KALFASUN® LOW PRESSURE UV

A wide range of low pressure fluorescent lamps with different powers and lengths, distinguished by the quality that Sportarredo places in all its products. The high-performance reflective screen that distinguishes Kalfasun lamps allows you to optimize the distribution of rays towards the body and to save part of the energy used: our goal is to keep energy consumption low while ensuring excellent radiant power.

# KALFASUN® UV3

Lamp based on an emission of rays as "sweet" as possible and selected for long and relaxing exposures. Its characteristic: effectiveness, with a reduction to a minimum of annoying skin redness. Usually used in tanning beds in more critical positions close to the body, recommended for delicate and fair skin.



## TECHNICAL DATA:

CODE	POWER	LENGHT (mm)	PLUG TYPE	LAMP TYPE	REFLECTOR	ELECTRODE TYPE	XY CODE (value of the higher power lamp)	UVB/UVA RATIO %	TAN SCORE
4028.4011.03	80W	1500	G13	UV	✓	SHORT	80-R-27/2,4	0,8%	LOW/3
4028.4011.01	100W	1760	G13	UV	✓	SHORT	100-R-23/1,9	0,6%	LOW/3
4028.4011.02	160W	1760	G13	UV	✓	SHORT	160-R-31/2,3	0,6%	LOW/3

# KALFASUN® XL EU03

190cm extra-long model with 180W power designed for all those solarium models compliant with the European regulation EU 03 to tan gently. The high performance combined with a balanced irradiation between UVB and UVA, with a prevalence of the latter, makes it an ideal lamp for medium / light skin and for an uncompromising golden tan.



## TECHNICAL DATA:

CODE	POWER	LENGHT (mm)	PLUG TYPE	LAMP TYPE	REFLECTOR	ELECTRODE TYPE	XY CODE (value of the higher power lamp)	UVB/UVA RATIO %	TAN SCORE
16976.094.0.0	180W	1900	G13	UV	✓	SHORT	180-R-40/3,2	0,8%	LOW/4

# KALFASUN® CL3

Lamp model with a delicate effect on the skin, characterized by a balanced tan in the safest way to tan but with very evident results, avoiding the erythema factor as much as possible. A must for fair skin and to get a tan without the annoying redness typical of the most delicate skin.



## TECHNICAL DATA:

CODE	POWER	LENGHT (mm)	PLUG TYPE	LAMP TYPE	REFLECTOR	ELECTRODE TYPE	XY CODE (value of the higher power lamp)	UVB/UVA RATIO %	TAN SCORE
16976.026.0.0	100W	1800	G13	UV	✓	SHORT	100-R-26/3,1	0,7%	LOW-MID/5
16976.025.0.0	160W	1800	G13	UV	✓	SHORT	160-R-26/2,3	0,5%	LOW-MID/5
16976.072.0.0	SPECIAL 160W	1800	G13	UV		SHORT	160-O-32/4,9	1,3%	MID/6

# KALFASUN® B14

Lamp that expresses all its character in the less performing powers, between 80W and 140W, mainly designed for particular lengths, used both in the base and in the top of medium level tanning beds with results comparable to higher power lamps.

A lamp with undisputed performances in its level, which will not disappoint even the most demanding.



## TECHNICAL DATA:

CODE	POWER	LENGHT (mm)	PLUG TYPE	LAMP TYPE	REFLECTOR	ELECTRODE TYPE	XY CODE (value of the higher power lamp)	UVB/UVA RATIO %	TAN SCORE
4028.4012.00	80W	1500	G13	UV	✓	SHORT	80-R-50/5,5	1,6%	MID/6
4028.4012.01	100W	1760	G13	UV	✓	SHORT	100-R-56/5,7	1,6%	MID/6
16976.024.0.0	100W	1800	G13	UV	✓	SHORT	100-R-56/5,9	1,6%	MID/6
4028.4012.02	140W	1500	G13	UV	✓	SHORT	140-R-86/6,4	2%	MID/6

# KALFASUN® B17

It is the best known and most celebrated Kalfasun lamp, balanced and timeless, focused on tanning the skin with a powerful but delicate combination of phosphors. An excellent balance between performance and versatility, in the 1800mm version it is also the most used lamp in all Sportarredo brand tanning equipment.



## TECHNICAL DATA:

CODE	POWER	LENGHT (mm)	PLUG TYPE	LAMP TYPE	REFLECTOR	ELECTRODE TYPE	XY CODE (value of the higher power lamp)	UVB/UVA RATIO %	TAN SCORE
4028.4014.03	160W	1760	G13	UV	✓	SHORT	160-R-126/10,6	3,5%	HIGH/8
16976.021.0.0	160W	1800	G13	UV	✓	SHORT	160-R-122/10,1	3,3%	HIGH/8

# KALFASUN® B23

Lamp with accentuated performance in the UVB radiation range, designed for results above expectations, with a more aggressive tan aimed at all types of darker skin already accustomed to indoor tanning. The Sportarredo standard in American equipment is the ideal solution for all those who expect an immediate result similar to a day spent on the beach under the sun.



## TECHNICAL DATA:

CODE	POWER	LENGHT (mm)	PLUG TYPE	LAMP TYPE	REFLECTOR	ELECTRODE TYPE	XY CODE (value of the higher power lamp)	UVB/UVA RATIO %	TAN SCORE
4028.4009.00	80W	1500	G13	UV	✓	SHORT	80-R-65/7,9	2,3%	HIGH(U-SA)/8
4028.4009.01	100W	1760	G13	UV	✓	SHORT	100-R-72/8,1	2,3%	HIGH(U-SA)/8
4028.4009.02	140W	1500	G13	UV	✓	SHORT	140-R-130/10,8	3,6%	HIGH(U-SA)/8
4028.4009.03	160W	1760	G13	UV	✓	SHORT	160-R-131/9,9	3,6%	HIGH(U-SA)/8

\*minimum order: 200pz

# KALFASUN® B25

Compared to the B23 series, it can be considered the enhanced version for an even more aggressive and wild tan. The balance of phosphors in the range of UVA and UVB, with the latter predominating, elevates the tanning power to the highest levels and makes it a must-have choice for those who want an extreme tan without compromise.



## TECHNICAL DATA:

CODE	POWER	LENGHT (mm)	PLUG TYPE	LAMP TYPE	REFLECTOR	ELECTRODE TYPE	XY CODE (value of the higher power lamp)	UVB/UVA RATIO %	TAN SCORE
4028.4009.04	160W	1760	G13	UV	✓	SHORT	160-R-139/9,8	3,3%	HIGH (USA)/9

# KALFASUN® XL

Designed for solarium models equipped with 190cm extra-long lamps. The increased power to 180W gives excellent performance qualities, with a high-level irradiance at the base of all Kalfasun lamps. The extreme balance of the phosphors contained in this lamp allows a balanced irradiation in both the UVA and UVB spectrum. A lamp destined to become a reference model for all Sportarredo brand tanning equipment, aimed at all those looking for a incredible golden tan, taking care of the skin without sacrificing excellent performance.



## TECHNICAL DATA:

CODE	POWER	LENGHT (mm)	PLUG TYPE	LAMP TYPE	REFLECTOR	ELECTRODE TYPE	XY CODE (value of the higher power lamp)	UVB/UVA RATIO %	TAN SCORE
16976.096.0.0	180W	1900	G13	UV	✓	SHORT	180-R-145/11,4	3,9%	HIGH/9

# KALFASUN® B27

Produced using a special blend of phosphors, which stimulates immediate pigmentation and a deeper and more lasting golden tan thanks to the studied combination of its UVA and UVB emissions. This range of lamps has a particularly stable and long life and is one of the best performing on the market, with exceptional tanning results that no other lamp comes close to. Furthermore, the short electrode construction allows to have a total irradiating surface, as opposed to long electrode lamps normally present in similar lamps on the market today. This makes Kalfasun B27 lamps the perfect upgrade for any low pressure bed or shower.



## TECHNICAL DATA:

CODE	POWER	LENGHT (mm)	PLUG TYPE	LAMP TYPE	REFLECTOR	ELECTRODE TYPE	XY CODE (value of the higher power lamp)	UVB/UVA RATIO %	TAN SCORE
4028.4017.01	160W	1760	G13	UV	✓	SHORT	160-R-119/6,5	2%	HIGH/10
16976.099.0.0	160W	1800	G13	UV	✓	SHORT	160-R-119/6,5	1,9%	HIGH/10

# KALFASUN® LOW PRESSURE COLORTAN

Ultraviolet light technology evolves towards a concept of well-being thanks to the new KALFASUN COLORTAN lamps by Sportarredo: colour, a symbol of expressiveness and vitality, becomes an integral part of our lamps to involve the user in an even more complete and satisfying way, synergistically with stimulation of Vitamin D generated by UV rays. The choice of colors therefore becomes an energizing (GREEN colour) or relaxing (YELLOW colour) moment depending on the desired composition, for a moment that goes beyond a simple tanning session, involving all the client's senses using the energetic force of the color choice. The tan generated by UV rays, consequently, is harmonious and extremely natural, with a benefit for the skin that involves the whole body and mind.  
Wellness combined with beauty!



# KALFASUN® COLORTAN YELLOW

The YELLOW UV emission lamps with a RELAXING effect are the natural choice for those who want to create a perfect combination dedicated to body and mind, to get out of the stress of everyday life and get a bright and brilliant tan. The particular yellow light combined with UV rays is always gentle on the skin, even at high powers.



## TECHNICAL DATA:

CODE	POWER	LENGHT (mm)	PLUG TYPE	LAMP TYPE	REFLECTOR	ELECTRODE TYPE	XY CODE (value of the higher power lamp)	UVB/UVA RATIO %	TAN SCORE
16976.124.0.0	100W	1800	G13	UV	✓	SHORT	100-R-32/4,5	1,2%	LOW-MID/5
16976.123.0.0	160W	1800	G13	UV	✓	SHORT	160-R-30/3	0,9%	LOW-MID/5
16976.154.0.0	120W	1900	G13	UV	✓	SHORT			
16976.140.0.0	180W	1900	G13	UV	✓	SHORT			

# KALFASUN® COLORTAN GREEN

The GREEN-colored UV lamps with an ENERGIZING effect are the natural choice for those who want to create a perfect combination dedicated to body and mind, to recharge their energy and get a brilliant and deep tan. The particular green light combined with UV rays is always gentle on the skin, even at high powers.



## TECHNICAL DATA:

CODE	POWER	LENGHT (mm)	PLUG TYPE	LAMP TYPE	REFLECTOR	ELECTRODE TYPE	XY CODE (value of the higher power lamp)	UVB/UVA RATIO %	TAN SCORE
16976.138.0.0	EU03 100W	1800	G13	UV	✓	SHORT			
16976.137.0.0	EU03 160W	1800	G13	UV	✓	SHORT			
16976.122.0.0	EU03 120W	1900	G13	UV	✓	SHORT	120-R-40/4,2	1,2%	LOW-MID/5
16976.139.0.0	EU03 180W	1900	G13	UV	✓	SHORT	100-R-98/9,8	2,4%	MID/6



# KALFASUN® LOW PRESSURE UV+RED LIGHT

The repeated winning challenges demonstrated in the field of light, applied to the world of aesthetics, have led our historical brands, Sportarredo Solarium and Kalfasun®, dedicated to indoor tanning, to adopt the latest Collatan™ wellness concept, applied to Sportarredo experience, in an extraordinary lamp, with dual UV + Collagen technology combined for a tanning, regenerating and innovative effect!

The incredible moisturizing effect of Kalfasun® Collatan™ lamps on the entire surface of the body regenerates and invigorates the deeper layers of the dermis, at the same time without having to give up a natural, intense and golden tanned effect. From the very first sessions, the skin will benefit from all 4 types of radiation contained in Kalfasun® Collatan™ lamps: an intense and attractive tan, thanks to UVA rays, the stimulation of melanin and vitamin D production, due to UVB rays, which prepares the skin for subsequent sessions by increasing the tanning effect, the blue light, with its purifying effect, makes the skin pure and reduces imperfections, the red light, stimulating the production of natural collagen, creates a revitalizing and luminous soothing effect for the skin.

# KALFASUN® COLLATAN EU03

The European way to tan and also take care of your skin. The balanced combination of UV rays and red light irradiation reduces skin dryness during the tanning session, stimulating the creation of collagen in the skin, increasing skin hydration. It perfectly adapts to the European legislation referring to the irradiation limits EU 03.



## TECHNICAL DATA:

CODE	POWER	LENGHT (mm)	PLUG TYPE	LAMP TYPE	REFLECTOR	ELECTRODE TYPE	XY CODE (value of the higher power lamp)	UVB/UVA RATIO %	TAN SCORE
16976.100.0.0	100W	1800	G13	UV	✓	SHORT	100-R-33/7,9	1,9%	LOW-MID/5
16976.092.0.0	160W	1800	G13	UV	✓	SHORT	160-R-36/4,7	1,1%	LOW-MID/5

# KALFASUN® COLLATAN XL EU03

Exclusive 180W model in 190cm extra-long version, with short electrode for optimal irradiation on the entire front surface of the lamp, but always in compliance with the European standard EU 03 with red light that integrates the benefits of photorejuvenation. A lamp destined to become the top model for all Sportarredo brand tanning appliances that comply with the EU 03 standard.

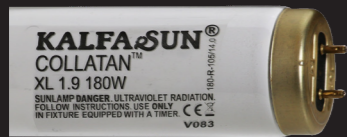


## TECHNICAL DATA:

CODE	POWER	LENGHT (mm)	PLUG TYPE	LAMP TYPE	REFLECTOR	ELECTRODE TYPE	XY CODE (value of the higher power lamp)	UVB/UVA RATIO %	TAN SCORE
16976.154.0.0	120W	1900	G13	UV	✓	SHORT	120-R-35/6,1	1,46%	LOW-MID/5
16976.102.0.0	180W	1900	G13	UV	✓	SHORT	180-R-35/4,5	1,1%	LOW-MID/5

# KALFASUN® COLLATAN XL

The exclusive 180W model in the 190cm extra-long version designed specifically for those who want performances from a lamp with improved characteristics compared to the European standard of the EU 03 regulation. This lamp is characterized by its high performance and the effectiveness of the tanning factor, always designed with a short electrode to maximize radiation over the entire visible surface.



## TECHNICAL DATA:

CODE	POWER	LENGHT (mm)	PLUG TYPE	LAMP TYPE	REFLECTOR	ELECTRODE TYPE	XY CODE (value of the higher power lamp)	UVB/UVA RATIO %	TAN SCORE
16976.104.0.0	180W	1900	G13	UV	✓	SHORT	180-R-105/14	5,3%	MID/6

# KALFASUN® COLLATAN

Like all Collatan™ models, UV rays combined with red light irradiation for an even more effective tan, always with an eye to skin hydration stimulating the creation of new collagen. The best choice for those who love an intense tan and offers added value to all customers. Lamp that exceeds the restrictions of the European 03 standard, often used in combination with UV-only lamps to maintain the best tanning results ever with a more performing UV irradiation value as a plus to differentiate from the competition.



## TECHNICAL DATA:

CODE	POWER	LENGHT (mm)	PLUG TYPE	LAMP TYPE	REFLECTOR	ELECTRODE TYPE	XY CODE (value of the higher power lamp)	UVB/UVA RATIO %	TAN SCORE
16976.095.0.0	160W	1800	G13	UV	✓	SHORT	160-R-110/15,3	5,7%	MID/6



KALFASUN®  
LOW PRESSURE  
KALFA-BIO  
COLLAGEN RED LIGHT

Kalfa-Bio lamps from the Kalfasun series by Sportarredo are designed to maximize the photo-rejuvenation effect of red light in all compatible equipment. The phosphors contained inside, in fact, allow optimal irradiation in the red range over the entire surface of the lamp, thanks to the presence of an internal reflective surface that maximizes the diffusion of light in the front part facing the customer, and to the short electrodes which allow the uniform diffusion of the radiation up to the ends of the lamp itself.

# KALFASUN® KALFA-BIO COLLAGEN RED LIGHT

The rejuvenating effect of red light for maximum results. This red light lamp can completely refurbish any tanning lamp to create a new photo-rejuvenation equipment and offer a new device to all customers. The strong impulse to the creation of collagen with this model of lamp allows a non-invasive treatment to stimulate the reduction of wrinkles and a more shiny and hydrated skin from the first sessions. {{ }}



## TECHNICAL DATA:

CODE	POWER	LENGHT (mm)	PLUG TYPE	LAMP TYPE	REFLECTOR	ELECTRODE TYPE	XY CODE (value of the higher power lamp)	UVB/UVA RATIO %	TAN SCORE
16976.074.0.0	25W	515	T5	RED LIGHT	✓	SHORT	-	-	-
	100W	1760	G13	RED LIGHT	✓	SHORT	-	-	-
16976.084.0.0	100W	1800	G13	RED LIGHT	✓	SHORT	-	-	-
16976.089.0.0	160W	1760	G13	RED LIGHT	✓	SHORT	-	-	-
16976.073.0.0	160W	1800	G13	RED LIGHT	✓	SHORT	-	-	-



## COMBINATION POSSIBILITIES

Example  
Kalfasun® UV + Kalfasun® Collatan™

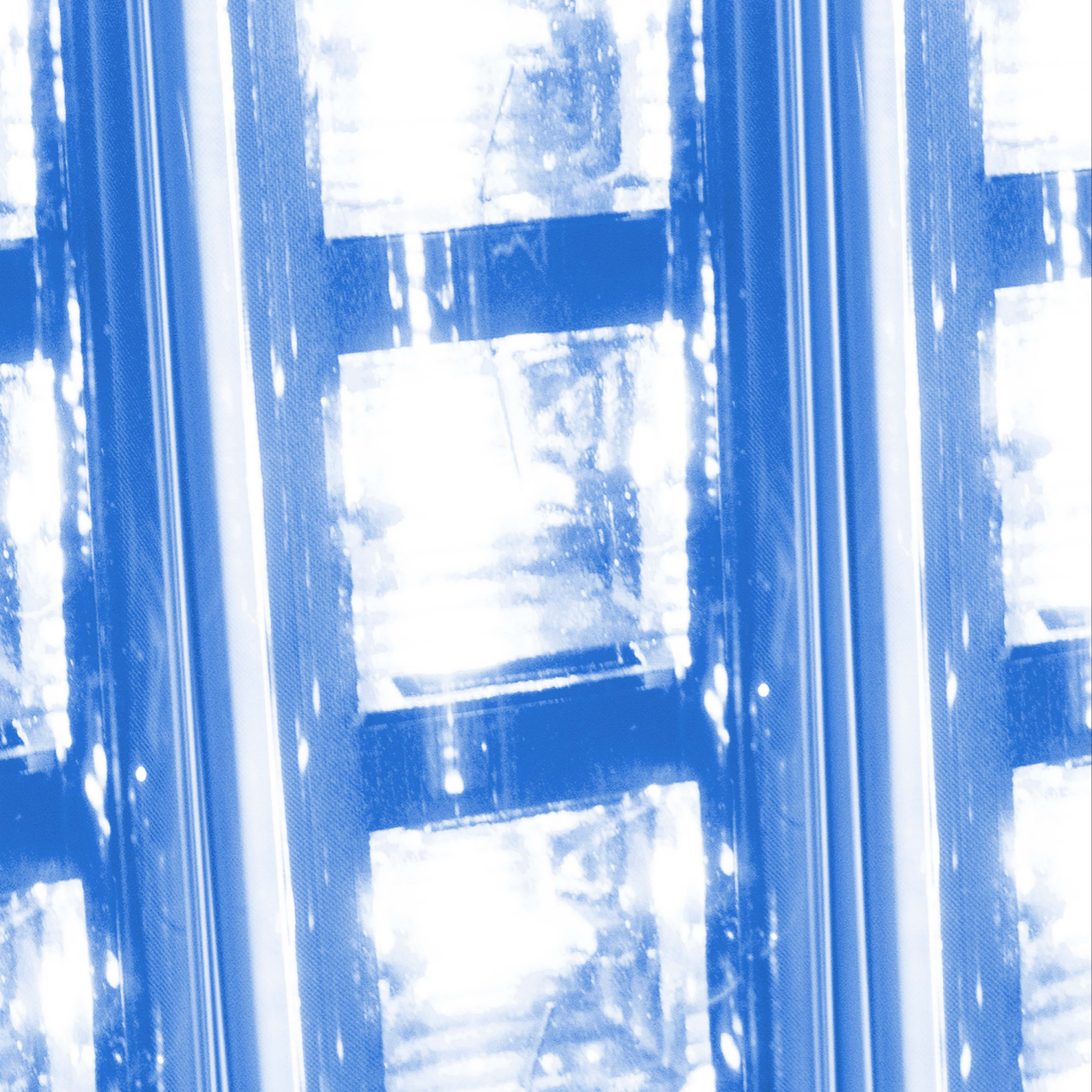
Example  
Kalfasun® Collatan™ + Kalfasun® Kalfa-Bio



KALFASUN®

HIGH  
PRESSURE

LAMPS



## KALFASUN® HIGH PRESSURE UV

In Kalfasun high pressure lamps, the emission spectrum is optimized by the addition of ultra pure and ultra dry metal halides. The composition of the metal halides and their mixture, as well as the geometric configuration of the electrodes and their distance, allows the lamp to reach maximum yield within the first minute of ignition.

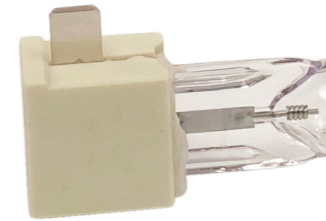
The metering of metal powder is performed by state-of-the-art electronically controlled machines, the ignition is checked at 100%, the dimensional and electrical checks ensure that these lamps have a guaranteed life of over 600 hours of work. The specific emission curve of the Kalfasun lamps, in combination with the special Sportarredo filters, ensure the achievement of perfect tanning results, the consequence of Sportarredo for being the pioneer company at an international level in the production of high pressure solariums and its research and development processes that still today, after more than thirty years, continue the study of this technology incessantly.

# KALFASUN® HIGH PRESSURE TECHNICAL DATA:

CODE	TYPE OF LAMPS	POWER (Watt)	QUARTZ	UVA (Watt)	CONNECTION	SUGGESTED USE (hours)
4028.4000.03	600	600	ozone free	115	wire	600
4028.4000.00	610	600	ozone free	115	bayonet	600
4028.4002.02	610 F	600	FDA	110	bayonet	600
4028.4000.04	630	600	ozone free	115	golden pin	600
4028.4002.00	630 F	600	FDA	110	golden pin	600
4028.4002.04	640 F	600	FDA	110	bi-pin	600
4028.4000.07	830	800	ozone free	110	golden pin	600
4028.4000.01	1400	1400	ozone free	250	wire	600
4028.4001.00	1510	1500	ozone free	250	bayonet	600
4028.4002.03	1510 F	1500	FDA	240	bayonet	600
4028.4001.03	1530	1500	ozone free	250	golden pin	600
4028.4002.01	1530 F	1500	FDA	240	golden pin	600
4028.4002.06	1540 F	1500	FDA	240	bi-pin	600
4028.4000.02	2300	2300	ozone free	400	wire	600
4028.4001.01	2510	2500	ozone free	400	bayonet	600

# KALFASUN® TYPES OF HOOF

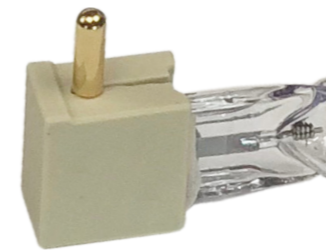
BAYONET



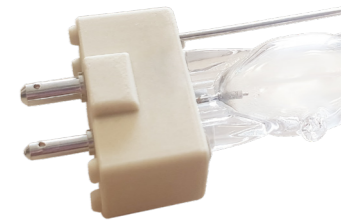
WIRE



GOLDEN PIN



BI-PIN - GY9.5





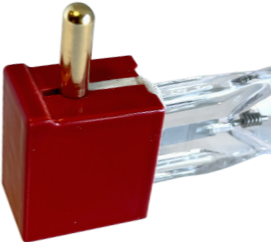
KALFA-RED  
HIGH PRESSURE  
UV+RED LIGHT

# KALFA-RED HIGH PRESSURE TECHNICAL DATA

CODE	TYPE OF LAMPS	POWER (Watt)	QUARTZ	UVA (Watt)	CONNECTION	SUGGESTED USE (hours)
4028.4000.09	630	600	ozone free	115	golden pin	600
4028.4001.04	1530	1500	ozone free	250	golden pin	600

# KALFA-RED HIGH PRESSURE TYPES OF HOOF

GOLDEN PIN



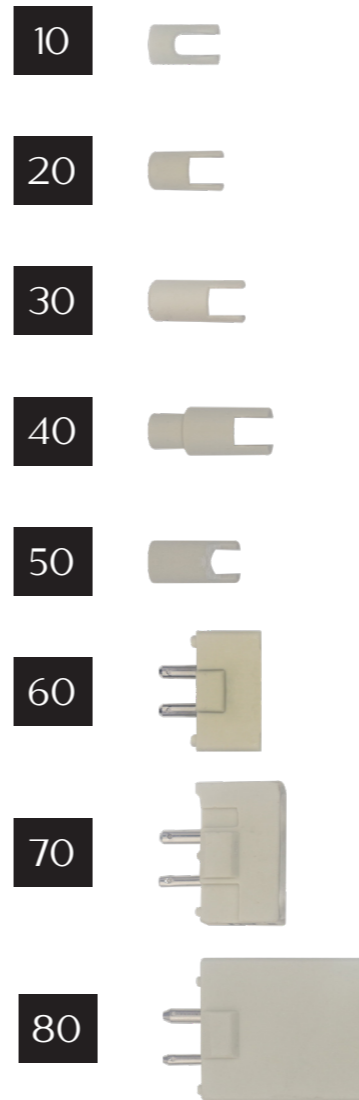


HIGH PRESSURE  
UV HP<sub>LUX</sub>

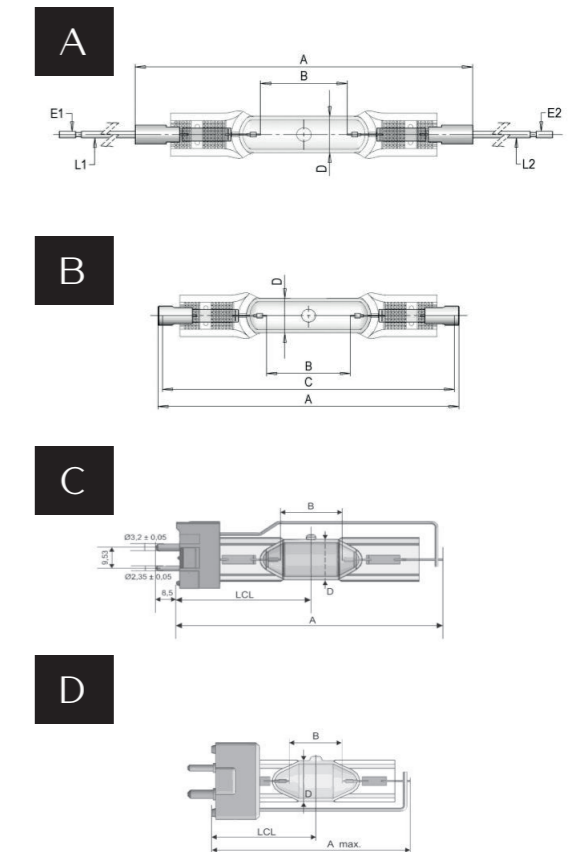
# UV HPLUX TECHNICAL DATA

CODE	TYPE OF LAMPS UV HPLUX	POWER (Watt)	QUARTZ	CONNECTION DRAWING	HOOF	DURATION (HOUR)
GY95.100001.UV	250W GY9.5	250W	standard	Bi-pin - GY9,5/24	C	60
GY95.100002.UV	300 500W GY9.5	400W (300-500W)	ozone free	Bi-pin - GY9,5/24	C	60
GY95.100003.UV	300 500W GY9.5 LONG	400W (300-500W)	ozone free	Bi-pin - GY9,5 L	E	80
LW100005.UV	400W LEADWIRE	400W	ozone free	Wire lead - BLS-027	A	50
R7S.100004.UV	400W R7S	400W	ozone free	Plug in - R7S	B	10
LW100007.UV	400/600W LEADWIRE	450W (400-600W)	ozone free	Wire lead - BLS-027	A	50
R7S.100006.UV	400/600W R7S	450W (400-600W)	ozone free	Plug in - R7S	B	10
GY95.100008.UV	400/600W GY9.5	500W (400-600W)	ozone free	Bi-pin - GY9,5/24	C	60
GY95.100011.UV	800W GY9.5	800W	ozone free	Bi-pin - GY9,5 coded	D	70
LW100010.UV	800W LEADWIRE	800W	ozone free	Wire lead - BLS-004	A	40
R7S.100009.UV	800W R7S	800W	ozone free	Plug in - R7S	B	10
LW100014.UV	1200 LEADWIRE	1200W	ozone free	Wire lead - BLS-006	A	40
LW100015.UV	1200W 230V LEADWIRE	1200W	ozone free	Wire lead - BLS-003	A	20
GY95.100012.UV	1010/1000W GY9.5 LONG	1000W	ozone free	Bi-pin - GY9,5 L	E	80
GY95.100013.UV	1020/1000W GY9.5	1000W	ozone free	Bi-pin - GY9,5/24	C	60
LW100016.UV	1500W 230V LEADWIRE	1500W	ozone free	Wire lead - BLS-003	A	20
LW100017.UV	2000W 230V LEADWIRE	2000W	ozone free	Wire lead - BLS-004	A	40
LW100018.UV	2000W 400V LEADWIRE	2000W	ozone free	Wire lead - BLS-004	A	40

# UV HPLUX TYPES OF HOOF



## DRAWINGS



ITALIAN  
DESIGN



Our history has been supporting for over 40 years the world of professional tanning, a legacy that the Sportarredo team wanted to enhance and evolve.

With a completely renewed vision, where beauty and well-being of the skin they are at the center of our daily work.

This vision leads us to develop solarium equipment with a minimal design, in full Italian style. With a technological research continues, always oriented towards a single result: a tan in full respect of the skin.



SKIN  
RESPECT



ITALIAN  
DESIGN  
SOLARIUM

ITALIAN  
DESIGN  
SOLARIUM

SPORTARREDO

OUR PLUS:

3  
YEARS

PLUS FREE  
WARRANTY

0%

MACHINE  
STOP\*

\* given Sportarredo 2021/22 machine stoppages

**SPORTARREDO**  
G R O U P

Via dell'Industria, 7 - 30020 Gruaro (VE) Italy  
Tel. 0421 767676 - [info@sportarredo.it](mailto:info@sportarredo.it)  
[www.sportarredo.com](http://www.sportarredo.com)